

# What is INSIGHT?



## INSIGHT:

- Is focused on eye data and eye health
- Makes anonymous eye data available for research that benefits patients and the NHS
- Could lead to breakthroughs in a wide range of conditions, including diabetes and dementia
- Applies the highest standards of data safety
- Is committed to transparency
- Prioritises the interests of patients and the NHS

### INSIGHT is led by two NHS Foundation Trusts:

- Moorfields Eye Hospital
- University Hospitals Birmingham

### It also includes four other partners – two from industry:

- Google Health
- Roche

### An academic partner:

- The University of Birmingham

### And a partner from the charity sector:

- Action Against AMD

Collectively, INSIGHT's partners bring world-leading expertise in eye care, patient advocacy, health technology and data management.

## How does INSIGHT benefit patients?

Research using anonymous eye health data is already helping to save sight by revolutionising the way diseases are diagnosed, treated and managed. For example, the NHS has used INSIGHT data to predict the impact of missed hospital appointments due to the COVID-19 pandemic on patients with 'wet' age-related macular degeneration.

You can find out more about the benefits of INSIGHT on our website: [insight.hdrhub.org](https://insight.hdrhub.org)

## Where does INSIGHT data come from?

The data available through INSIGHT has been collected from patients at Moorfields Eye Hospital and University Hospitals Birmingham. In the future, other NHS organisations may add their data to INSIGHT.

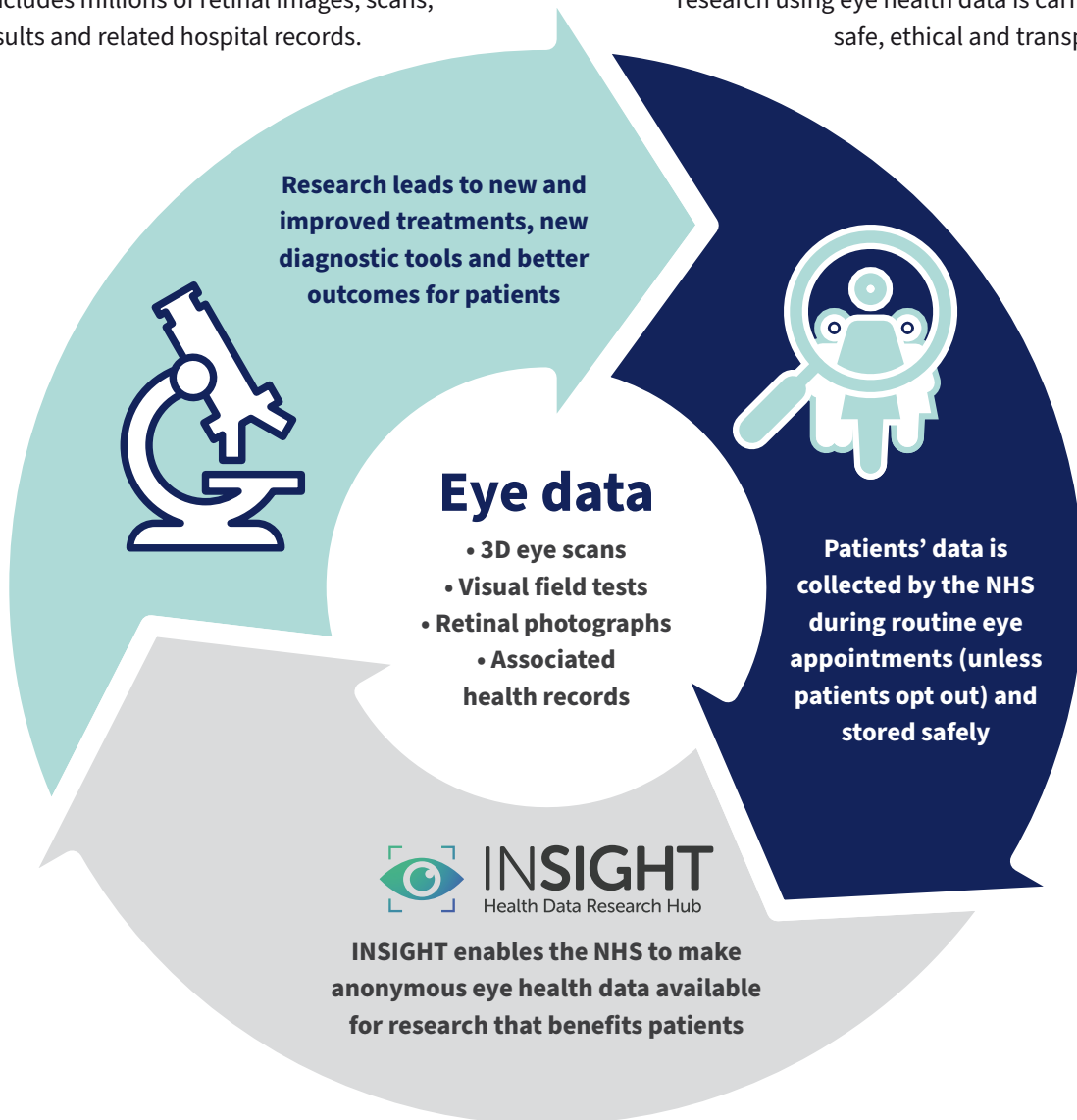
INSIGHT only makes anonymous data available for research. This means we remove anything that could identify an individual patient, such as name, address and NHS number. We also remove the data of patients who have opted out of sharing their data for research and health planning.

You can find out more about your right to opt out on the NHS Digital website: [digital.nhs.uk/services/national-data-opt-out](https://digital.nhs.uk/services/national-data-opt-out)

# Why was INSIGHT set up?

INSIGHT was set up to provide access to anonymous patient data for approved research. The data includes millions of retinal images, scans, eye test results and related hospital records.

INSIGHT encourages research that improves eye care and healthcare in general. We ensure that research using eye health data is carried out in a safe, ethical and transparent way.



You can find out more about what we do on our website: [insight.hdrhub.org](https://insight.hdrhub.org)